



Broome Needle and Syringe Exchange Program

Kimberley Mental Health Drug Service





Acknowledgement of Country

I'd like to begin by acknowledging the Traditional Owners of the land on which we meet today, the Whadjuk Boodjar people of the Noongar nation and pay my respects to Elders past and present.

I like to acknowledge the Traditional Owners of the land on which Alishia and the Broome NSEP is on the land of the Yawuru people and pay my respects to Elders past and present.

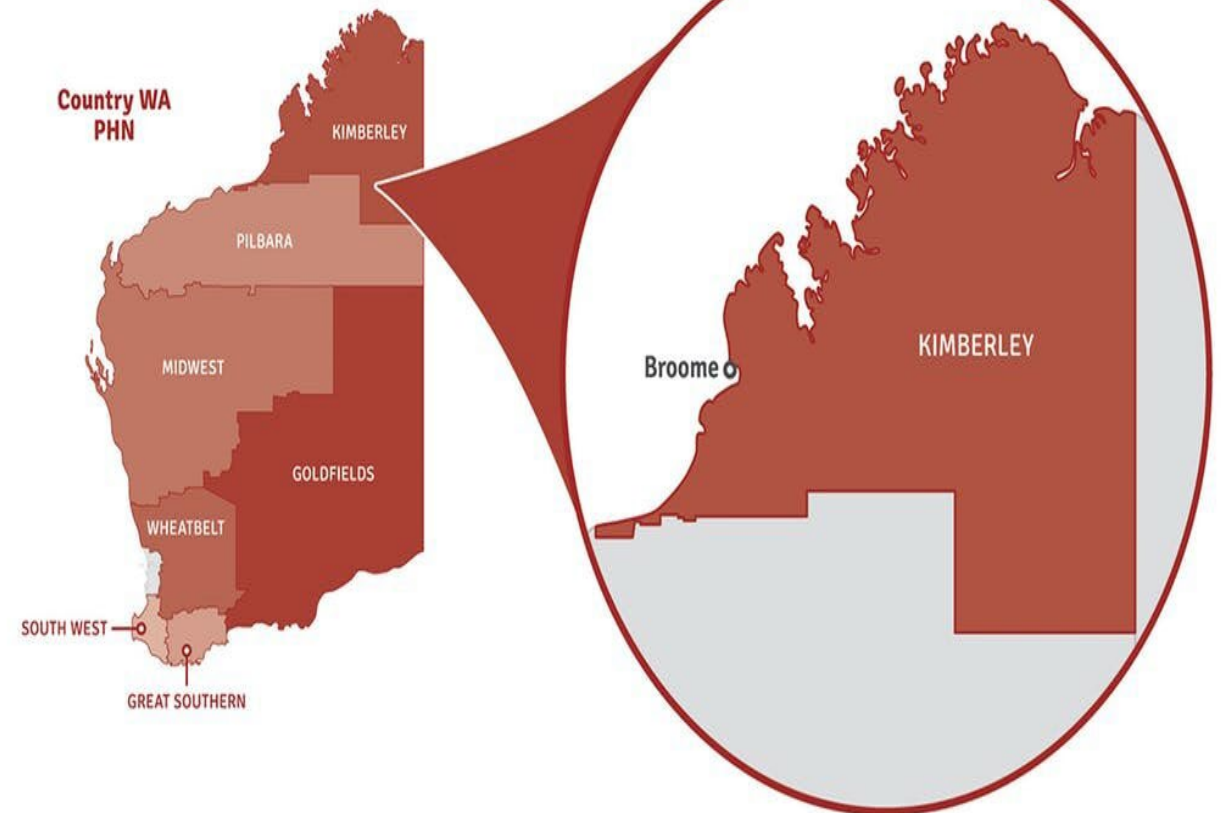
I'd also like to acknowledge the Traditional Owners of the land on which I live, work and play the Kariyarra, people and pay my respects to Elders past and present.

I would like to extend my acknowledgement too, our first nations people here today with us. Additionally acknowledge that sovereignty has never been ceded. The land we are on, the land we live, work, breathe, eat and sleep; always was and always will be Aboriginal Land.



Kimberley Mental Health Drug Service

- **Alishia Cartmill – Kimberley Community Drug and Alcohol Service Coordinator**
- **Tim Iffla – Regional Needle and Syringe Program Coordinator - Pilbara**



Needle and Syringe Program – Setting the Scene

A former hospital worker in Western Australia's far north has raised the alarm after the number of needles handed out to patients almost doubled in 12 months.



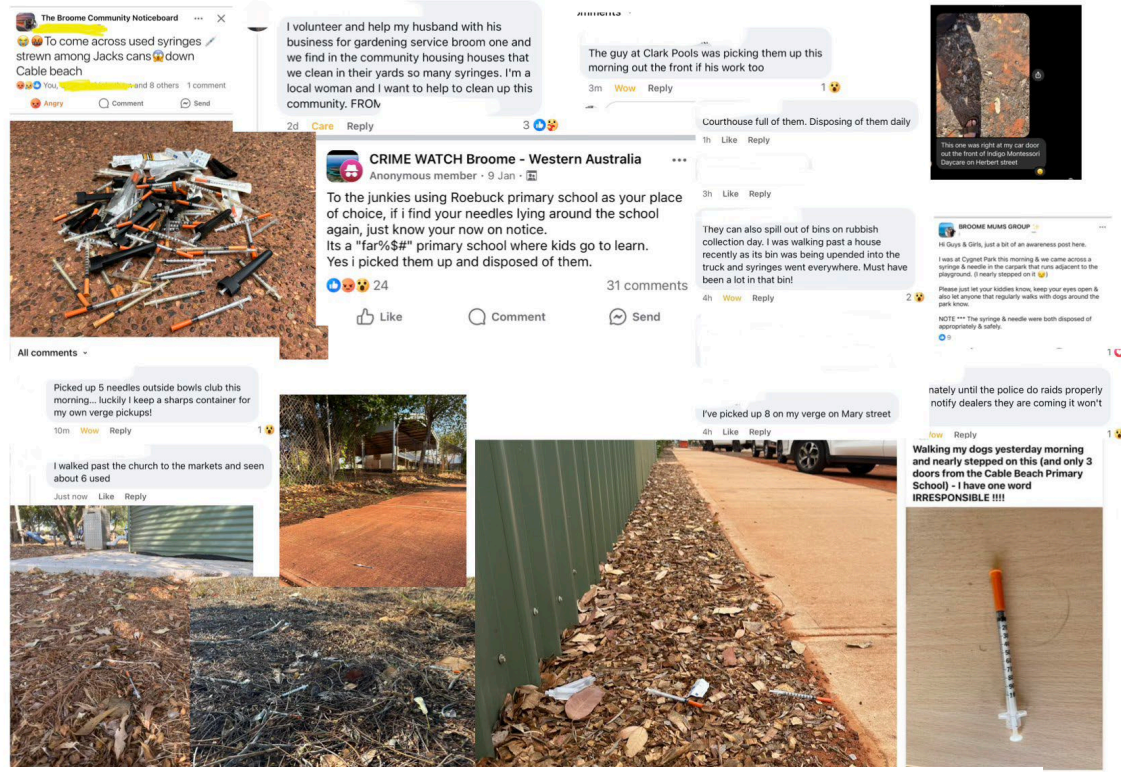
A former Broome hospital worker has raised the alarm on children accessing needles. (ABC Kimberley; Mya Kordic)

Zoe, who the ABC has chosen not to name for privacy reasons, has worked at Broome Regional Hospital distributing needle and syringe packs, known as Fitpacks, as part of her job.

She said it left her feeling "uncomfortable".



Sharps in the Community- Setting the Scene



Broome needle and syringe exchange program confirmed after residents raise safety fears

Frustrated residents say they are finding more discarded needles around Broome, including at ovals and primary schools, prompting the state government to introduce the program.

26 Oct 2024 / ABC NEWS 2m read

Methamphetamine addicts left with 'nowhere to go' in the Kimberley

A criminal lawyer in the state's far north says clients with methamphetamine addiction on remand or bail have been left with no treatment options, amid concerns the drug's use in the region has reached dire proportions.

20 Oct 2024 / ABC NEWS 4m read

Judge highlights outback WA's growing meth problem while sentencing drug courier

A District Court judge says communities are being "completely and utterly destroyed" by methylamphetamine, while sentencing a Kimberley man for his role as a courier in a significant drug operation.

15 Oct 2024 / ABC NEWS 2m read



Broome NSEP – Opportunity for A Different Approach

- KCADS Values:
 - Consumers at the forefront – PWID one of our services most vulnerable population.
 - Responding to community concern.
 - Connection.
- Ability to be innovative:
 - staffing model
 - more than an BBV public health response
 - no wrong door approach.
- Intra-district partnership and collaboration.
- Respond timely to Government with an informed best practice approach that was supported by stakeholders and community.



Is alcohol or drug use making you worry?

We are here to support you and your loved ones.

Kimberley Community Alcohol and Drug Service (KCADS)
Counsellors are based in Broome, Derby, Fitzroy Crossing,
Halls Creek, Kununurra and surrounding communities.

You don't need a referral – just walk in, give us a call,
or we can come to you.

This is a free service.

Get in touch
Kimberley Community Alcohol
and Drug Service (KCADS)
Phone: 9194 2640



To provide feedback on this publication email: publications@health.wa.gov.au. Alternative formats can be provided on request. © WA Country Health Service



Broome NSEP – A Different Approach – the Location/Site



Broome NSEP – A Different Approach Operational Considerations



Government of Western Australia
WA Country Health Service

Western Australia Country Health Service – Kimberley Mental Health Drug Service- Guidelines for establishment and Operation for Broome Needle and Syringe Exchange Program.

Guidelines for the establishment and operation of a needle and syringe program



Government of Western Australia
WA Country Health Service

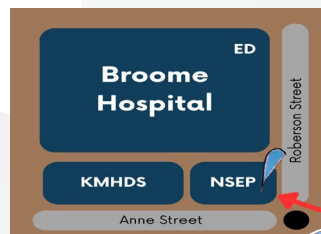


Kimberley Mental Health
& Drug Service

Broome Needle and Syringe Exchange Program (NSEP)

Open weekdays 9am – 4pm

Corner of Anne and Robinson Street



Look out
for the
flag!

Drop in or call (08) 9194 2640 for more information.

Take Home Naloxone Program Procedure

Needle Syringe Exchange Program



Learnings and Considerations





Questions



Alishia Cartmill
KCADS Coordinator
Alishia.Cartmill@health.wa.gov.au

Tim Iffla
Pilbara Regional NSP Coordinator
Timothy.Iffla@health.wa.gov.au

